

WARDS
SEA KING

**OUTBOARD
MOTOR**

PARTS CATALOG

MW-30

6

O.B.C. CERTIFIED BRAKE H.P. AT 4,500 R.P.M.

MODEL
VWB-20906A
VWB-27006A

Printed in U.S.A.

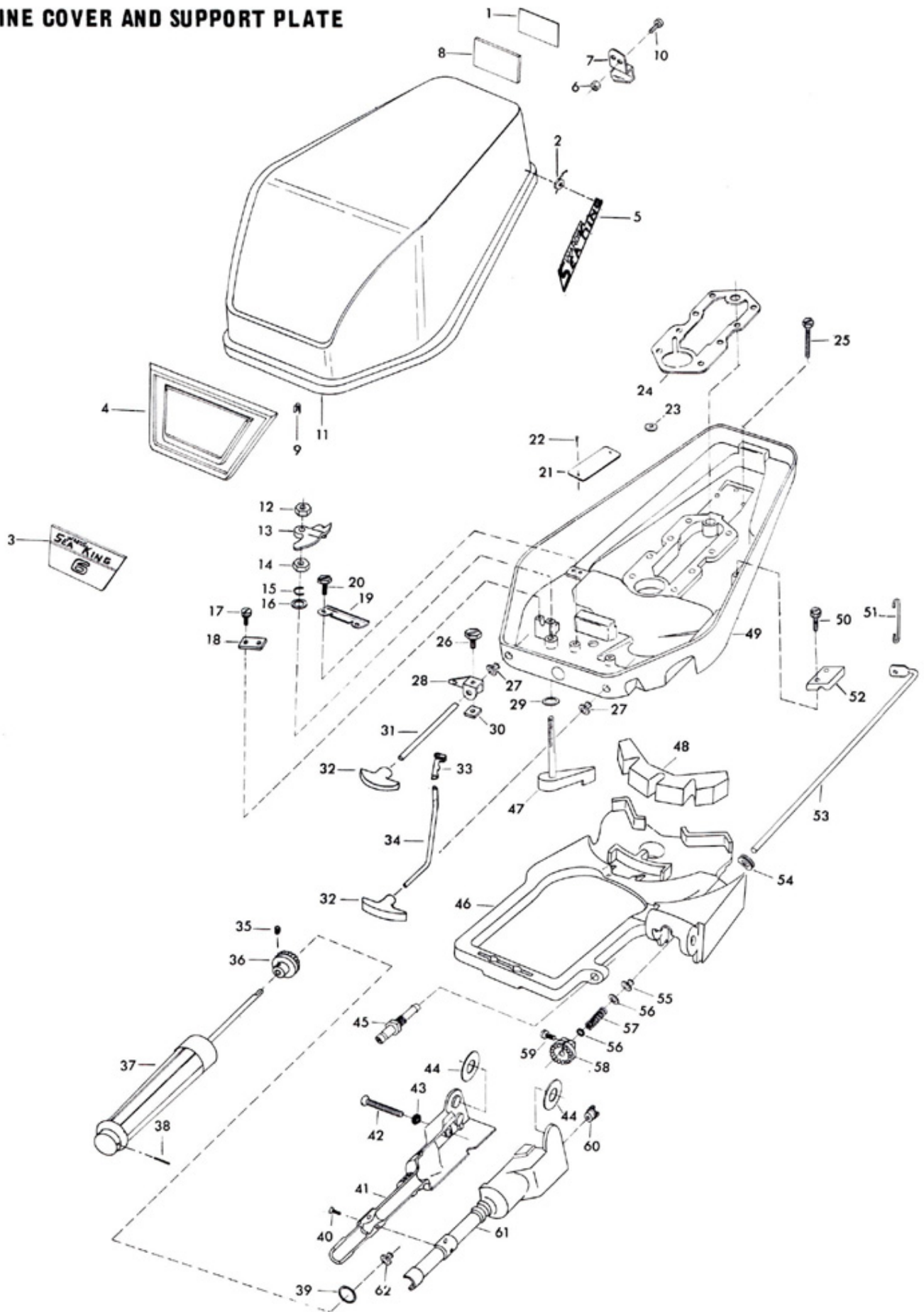
10/69

SEA KING—SOLD EXCLUSIVELY BY **MONTGOMERY WARD**

Engine Cover and Support Plate

ILLUS. NO.	PART NO.	QTY.	DESCRIPTION
1	400528	1	Insert "6"
2	1753	14	Fastener
3	400512	1	Plate "6"
4	400711	1	Engine cover plate
5	392366	2	Name plate "Sea King"
6	7011	2	Elastic stop nut, 10 - 24
7	A199480-1	1	Retainer engine cover w/screws and nuts
8	327180	1	Engine cover, rear
9	9037	6	Fastener
10	1475	2	Fill hd screw, S.S., 10 - 24 x 1/2
11	S400712	1	Engine cover w/retainer and latch
12	1518	1	Hex nut, 5/16 - 18
13	89777-1	1	Latch cam, engine cover
14	1518	1	Hex nut, 5/16 - 18
15	73741-1	1	Retaining ring
16	8032	1	Plain washer
17	1436	2	Pan hd screw w/lockwasher, 10 - 24 x 7/16
18	197178	1	Retainer
19	197455-1	1	Starter rope guide
20	1481	2	Hex slot hd screw, S.S., 1/4 - 20 x 9/16
21	A197395-2	1	Identification plate w/screws
22	1293	2	Rd hd drive screw, 2 x 3/16
23	53991-2	2	Grommet, shear pin
24	50279	1	Cylinder exhaust gasket
25	1223	3	Hex slot hd screw, 1/4 - 20 x 1 - 1/8
26	1558	1	Hex slot hd screw, 10 - 24 x 3/8
27	197319	2	Bearing
28	78190	1	Idle adjustment arm
29	8049	1	Bowed washer
30	1365	1	Square nut, 10 - 24
31	197105	1	Shaft, idle adjustment
32	197507	2	Knob
33	341384	1	Retainer choke rod
34	197503	1	Choke rod
35	1614	1	Hex socket headless set screw, 1/4 - 20 x 1/4
36	197691	1	Steering handle gear
37	A197688-1	1	Grip, steering handle w/collar and shaft
38	8542	1	Spring pin, S.S.
39	53795-1	1	Steering handle grip dampener
40	1606	2	Oval hd screw, 8 - 32 x 7/16
41	224576	1	Steering handle, starboard
42	1153	1	Flat hd screw, S.S., 1/4 - 20 x 1 - 7/8
43	1609	1	Ext tooth lockwasher
44	197220	2	Nylon washer
45	197767-1	1	Fuel line bushing
46	197940-1	1	King pin mounting plate
47	A183763-1	1	Cover latch handle w/shaft
48	197347	1	Shock mount, upper
49	197038-1	1	Support plate
50	1225	2	Hex slot hd screw, 10 - 24 x 5/8
51	197510	1	Link, shaft to lever
52	197527	1	Bearing cap, magneto control shaft
53	197838	1	Magneto control shaft
54	183504	1	Grommet magneto control shaft
55	197813	1	Bearing, magneto control shaft
56	183175	2	Washer
57	183300	1	Spring
58	183691-1	1	Magneto control shaft gear
59	1642	1	Socket hd cap screw, 10 - 24 x 3/4
60	183689	1	Bearing, steering handle shaft
61	224079	1	Steering handle, port
62	183818	1	Bearing
	197756-3	1	Packing, support plate (not shown)
	85735	14	Seal, medallions (not shown)
	197248-3	1	Decal "choke" (not shown)
	197394-2	1	Decal "idle adjustment" (not shown)
	210397-2	1	Decal "shift" (not shown)
	197894-2	1	Steering handle indicator (not shown)

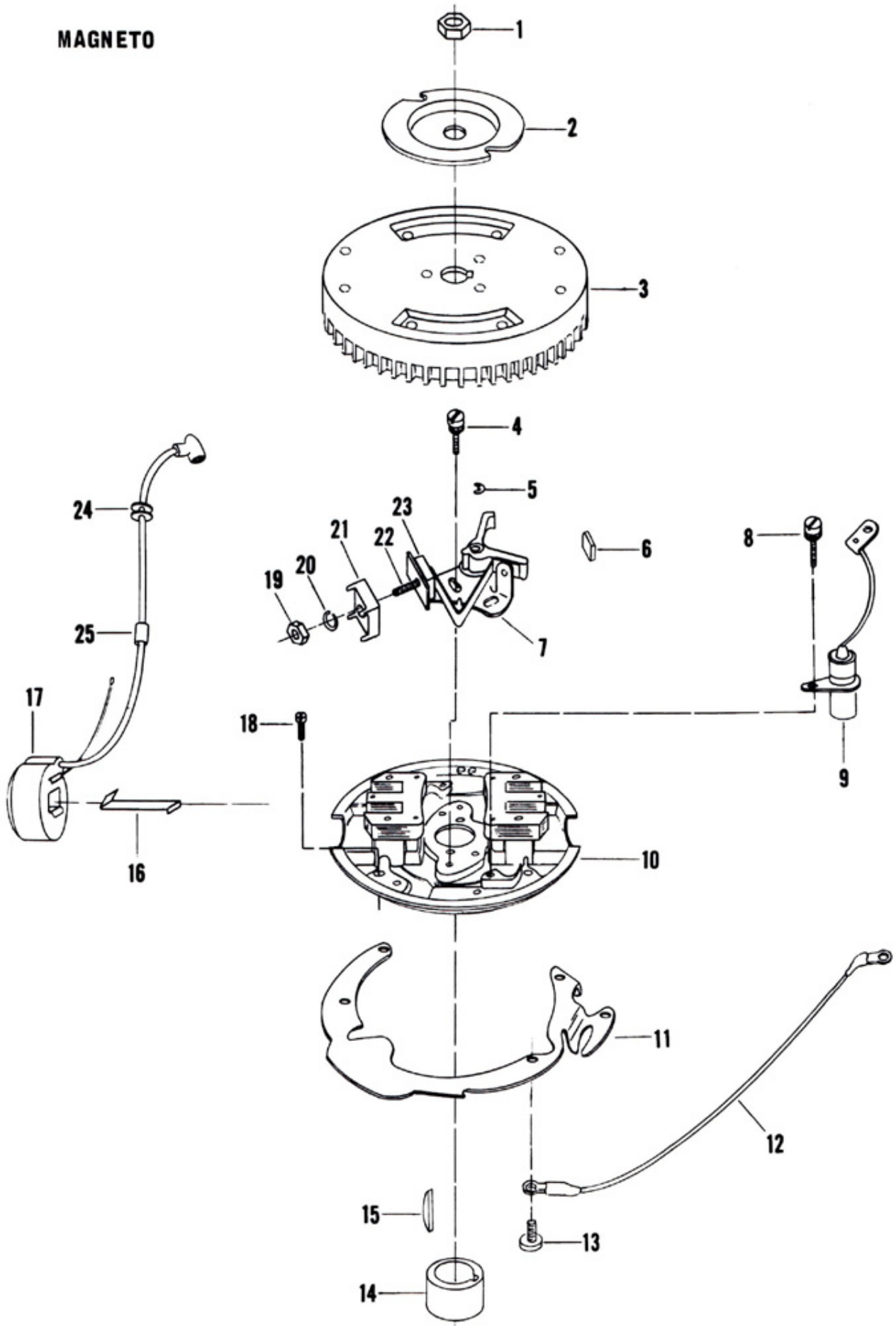
ENGINE COVER AND SUPPORT PLATE



Magneto

ILLUS. NO.	PART NO.	QTY.	DESCRIPTION
1	1352	1	Hex nut, 7/16 - 20
2	901456-1	1	Starter collar
3	59097	1	Flywheel
4	12170	4	Contact screw w/lockwasher
5	12097	2	Retaining ring
6	12228	1	Cam wiper felt
7	12153	2	Breaker point set
8	12083	2	Condenser screw w/lockwasher
9	12181-1	2	Condenser
10	A59095-2	1	Stator plate w/coils , condensers , points and screws
11	197192-4	1	Throttle cam plate
12	289664	1	Lead wire ground
13	1075	4	Fill hd screw , 10 - 24 x 1/2
14	59002	1	Breaker cam
15	54498	1	Magneto key
16	12146	2	Coil wedge spring
17	A12231	2	Coil w/lead wire
18	1090	4	Fill hd screw w/lockwasher , 10 - 24 x 9/16
19	12127	2	Stud nut
20	8055	2	Lockwasher
21	12128	2	Insulator , outside
22	12142	2	Connection stud
23	12129	2	Insulator , inside
24	12088	4	Grommet
25	12141	1	Sleeve
	12091	1	Lead wire marker-top (not shown)
	K-750	2	Sparkie Kit (not shown)
		1	Magneto - complete, order component parts

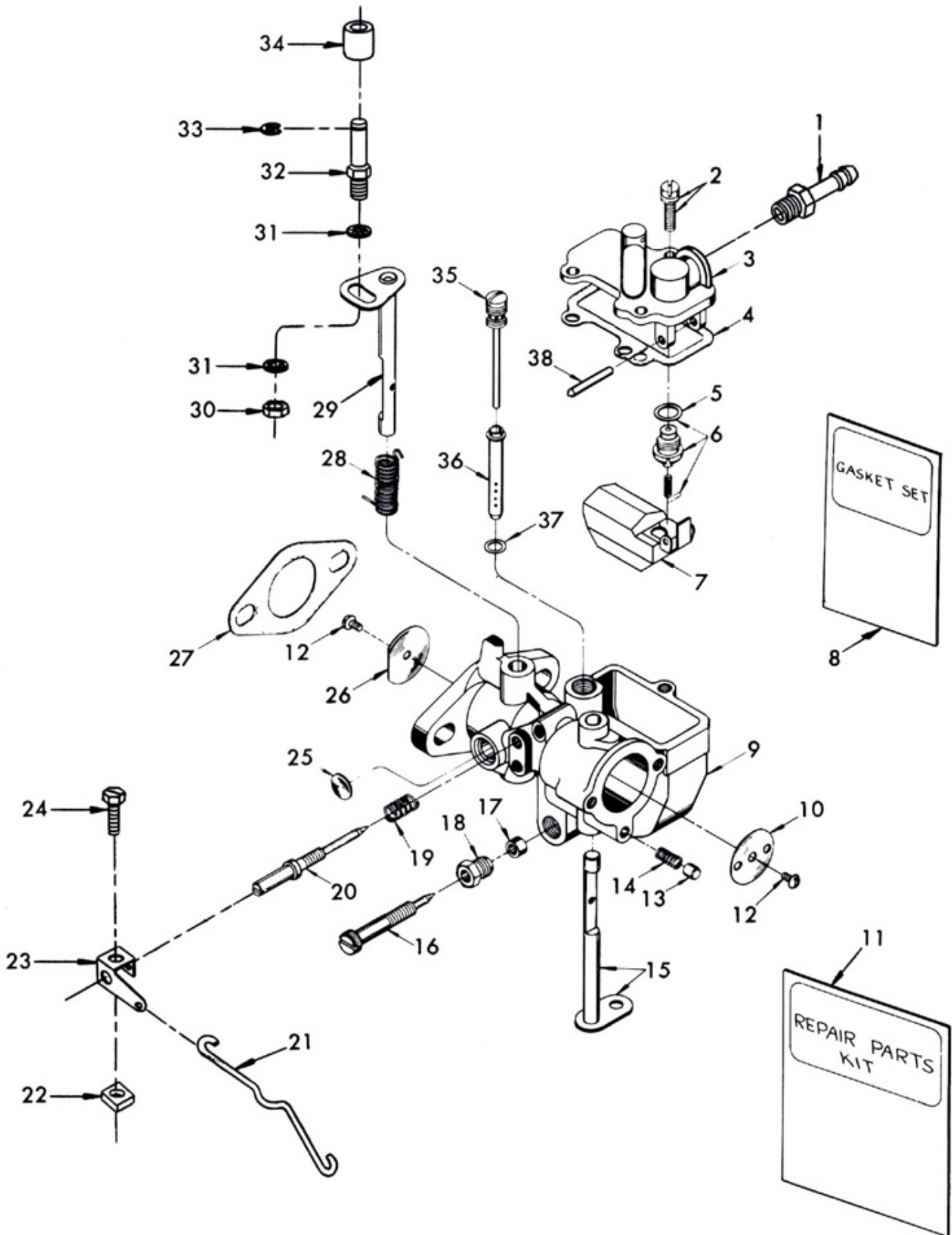
MAGNETO



Carburetor

ILLUS. NO.	PART NO.	QTY.	DESCRIPTION
1	27768-1	1	Fuel line connector
2	08315	3	Bowl cover screw
3	013237	1	Bowl cover
4	08658	1	Bowl cover gasket
5	02510	1	Inlet seat gasket
6	* 013239	1	Inlet needle seat and gasket
7	011928	1	Float
8	* GS-177	1	Gasket set
9		1	Order 197061-1, MT-91B carburetor complete
10	010977	1	Choke shutter
11	RK-596	1	Repair parts kit, includes all items marked with an asterisk (*)
12	* 08942	2	Choke and throttle shutter screw and lockwasher
13	05454	1	Choke friction pin
14	08805	1	Choke friction spring
15	013240	1	Choke shaft and lever
16	* 013258	1	Main adjustment screw
17	011351	2	Main adjustment screw packing
18	07282	1	Main adjustment packing screw nut
19	* 08793	1	Idle adjustment screw spring
20	* 013235	1	Idle adjustment screw
21	197193	1	Link, idle adjustment
22	1365	1	Square nut, 10 - 24
23	78190	1	Idle adjustment arm
24	1558	1	Hex slot hd screw, 10 - 24 x 3/8
25	* 02531	2	Body channel welch plug
26	013243	1	Throttle shutter
27	197906	1	Carburetor gasket
28	* 013232	1	Throttle shaft return spring
29	013242	1	Throttle shaft and lever
30	1340	1	Hex nut, 10 - 32
31	8058	2	Int tooth lockwasher
32	197316	1	Throttle cam follower
33	78410	1	Retaining ring
34	78318	1	Throttle cam follower roller
35	* 011127	1	Idle tube
36	* 013314	1	Main nozzle
37	06076	1	Main nozzle gasket
38	* 011564	1	Float lever pin
	197061-1	1	Carburetor, complete MT-91B

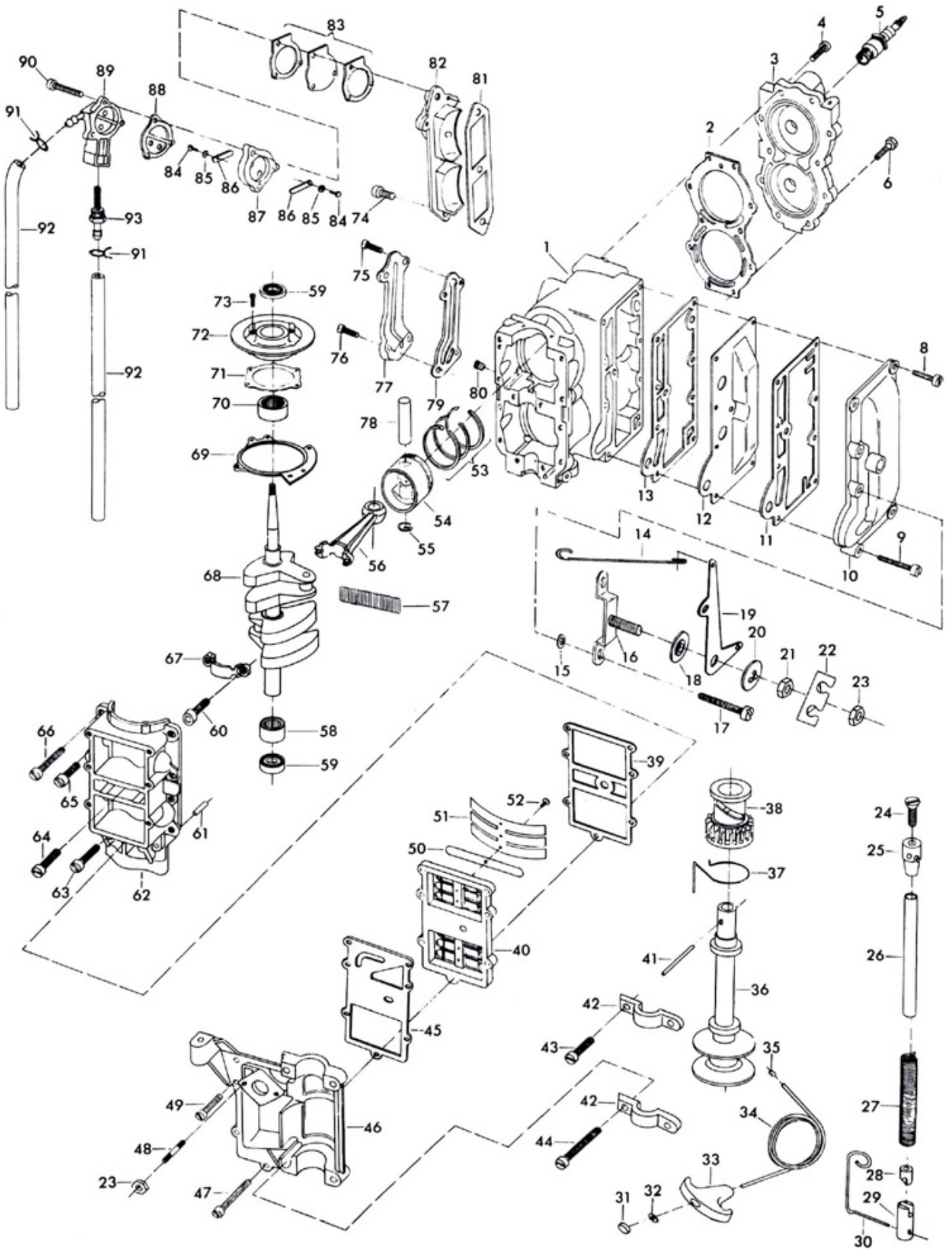
CARBURETOR



Power Head, Fuel Pump, Reed Plate and Starter

ILLUS. NO.	PART NO.	CTY.	DESCRIPTION	ILLUS. NO.	PART NO.	CTY.	DESCRIPTION
1	A197010-1	1	Cylinder w/crankcase cover screws, dowel pin, drain valves, transfer port cover and gasket	57	* A36571-1	2	Needle bearings, connecting rod, (28 per set)
2	571529-3	1	Cylinder head gasket	58	21014-2	2	Bearing, crankshaft lower
3	197518	1	Cylinder head	59	* 23146-3	2	Seal
4	1111	9	Fill hd screw, 1/4 - 20 x 7/8	60	* 36634	4	Connecting rod screw
5	54227	2	Spark plug, H-10-J	61	* 8559	2	Dowel pin
6	197936-1	2	Cylinder head screw	62	*	1	Crankcase cover, order A197010-1 (cylinder)
8	1084	5	Fill hd screw, 10 - 24 x 5/8	63	* 1044	2	Fill hd cap screw, 1/4 - 20 x 1 - 3/8
9	1069	2	Fill hd screw, 10 - 24 x 1 - 1/16	64	* 1100	2	Fill hd screw, 1/4 - 20 x 1 - 1/8
10	571152	1	Exhaust port cover	65	* 1628	6	Fill hd screw, 12 - 24 x 5/8
11	50153	1	Gasket, exhaust port cover	66	* 1107	3	Fill hd screw, 1/4 - 20 x 3/4
12	571151	1	Exhaust port plate	67		2	Connecting rod cap, order 2A36016-3 (connecting rod)
13	50154	1	Gasket, exhaust port plate	68	* 50018-2	1	Crankshaft
14	197509	1	Link, magneto control lever	69	73082	1	Magneto stator ring
15	8013	2	Plain washer	70	55013	1	Bearing, crankshaft upper
16	A197440	1	Pivot pin w/retainer	71	224277	1	Gasket, crankshaft bearing cage
17	1073	2	Fill hd screw, 10 - 24 x 1 - 1/4	72	A54144	1	Crankshaft bearing cage w/bearing and seal
18	183813	1	Bearing, magneto control lever	73	1075	4	Fill hd screw, 10 - 24 x 1/2
19	197525-1	1	Lever, magneto control	74	* 1110	2	Fill hd screw, 1/4 - 20 x 5/8
20	183282	1	Washer, magneto control lever	75	1089	3	Fill hd screw, 10 - 24 x 9/16
21	7019	1	Hex nut, 1/4 - 20	76	1652	1	Fill hd screw, 10 - 24 x 1 1/16
22	901834	1	Lead wire clip	77	562471-1	1	Cylinder drain cover
23	1490	2	Hex nut, 1/4 - 20	78	* 7017	2	Piston pin
24	1156	1	Flat hd screw, 1/4 - 20 x 1/2	79	562472	1	Cylinder drain cover gasket
25	901739	1	Starter rewind spring drive	80	* 66679-1	2	Valve, cylinder drain
26	901710	1	Starter rewind spring guide post	81	* 26223	1	Transfer port cover gasket
27	901970	1	Starter rewind spring	82	66222	1	Transfer port cover
28	901737	1	Starter spring retainer	83	2A24747-1	1	Fuel pump diaphragm w/gasket
29	183971	1	Starter retainer extension	84	1286	2	Pan hd screw, 4 - 40 x 3/16
30	183455	1	Starter rope guide	85	8003	2	Plain washer
31	51332	1	Starter rope handle plug	86	18160-1	2	Reed
32	8012	1	Plain washer	87	A24757-3	1	Fuel pump reed plate w/reeds and screws
33	51132-1	1	Starter rope handle	88	24748	1	Gasket, fuel pump
34	A190232	1	Starter rope w/end	89	901746	1	Fuel pump cover
35	24333	1	Starter rope end	90	1069	3	Fill hd screw, 10 - 24 x 1 - 1/16
36	183239-2	1	Starter spool	91	2706772	4	Fuel line clamp
37	901424-1	1	Starter pinion spring	92	A71754	2	Fuel line w/clamps
38	40674-4	1	Starter pinion gear	93	901811	1	Fuel line filter
39	23159	1	Gasket reed plate		C197010-1	1	Cylinder complete, includes all items marked with an asterisk (*)
40	A36158	1	Reed plate w/reeds, stops, and screws		G-118	1	Gasket set
41	40425	1	Starter pinion pin			1	Engine touch-up paint spray bomb
42		2	Starter bearing cap, Order 2A197167 (adapter flange)			1	Metalic Gold
43	1111	2	Fill hd screw, 1/4 - 20 x 7/8			1	Engine touch-up paint spray bomb
44	1056	1	Fill hd screw, 1/4 - 20 x 2			1	Satin Frost White
45	652404	1	Carburetor adapter plate				
46	2A197167-1	1	Carburetor adapter flange w/bearing caps and screws				
47	1115	1	Fill hd screw, 12 - 24 x 1 - 1/4				
48	19209-2	2	Carburetor stud				
49	1121	6	Fill hd screw, 12 - 24 x 7/8				
50	26160-2	6	Reed				
51	26161	2	Reed stop				
52	1295	6	Rd hd screw, 4 - 40 x 1/4				
53	* A26260-1	1	Piston ring set (6 per set)				
54	* 26015	2	Piston				
55	* 96-2	4	Lock ring				
56	* 2A36016-3	2	Connecting rod w/caps and screws				

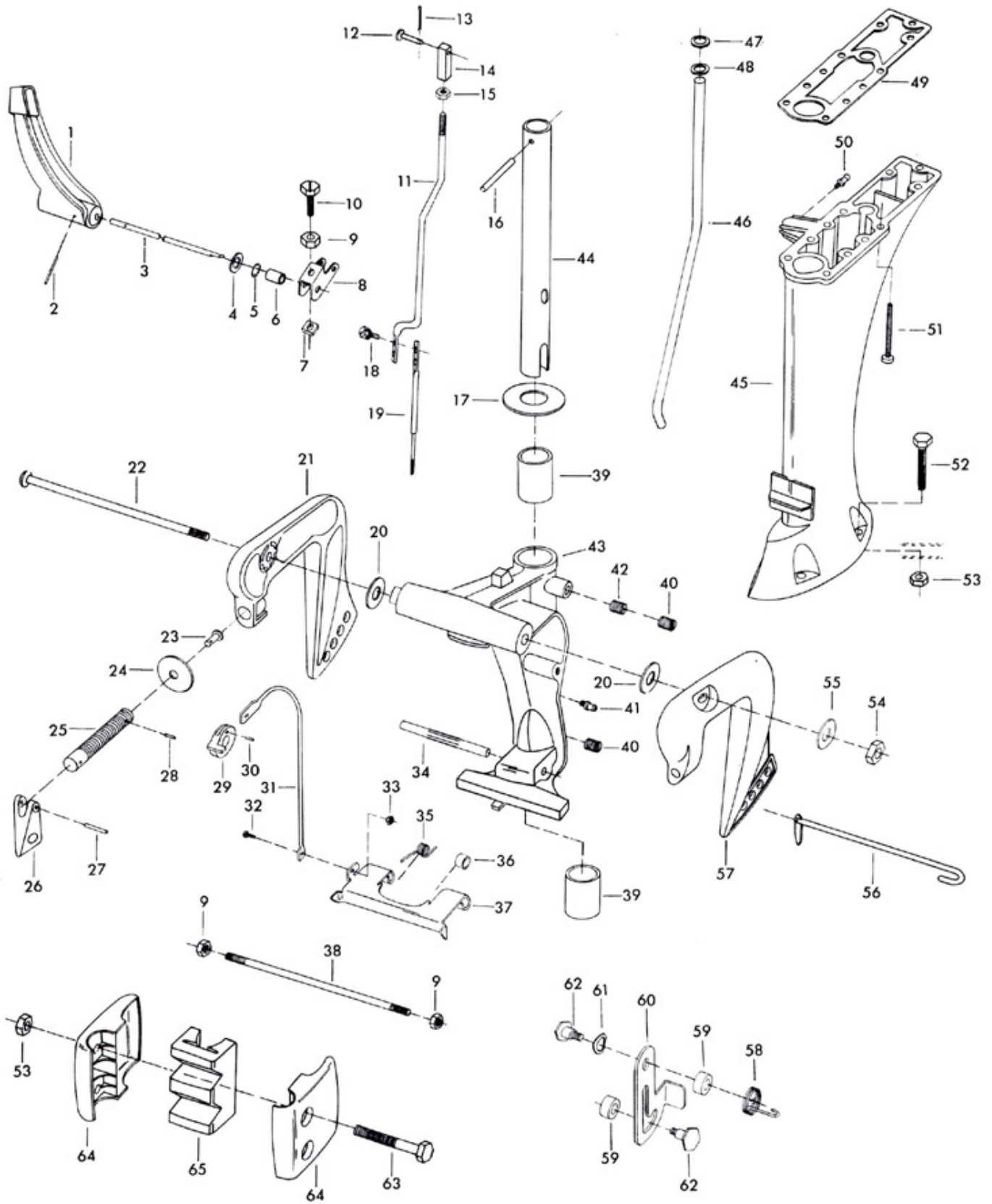
POWER HEAD, FUEL PUMP, REED PLATE AND STARTER



Motor Leg

ILLUS. NO.	PART NO.	QTY.	DESCRIPTION	ILLUS. NO.	PART NO.	QTY.	DESCRIPTION
1	A197614	1	Gear shift handle , shaft, and spring pin	37	226349	1	Reverse lock
2	8540	1	Spring pin	38	197211	1	Stud, stern bracket
3	197611	1	Shaft, gear shift handle	39	901169-1	2	Bearing, swivel bracket
4	154415	1	Nylon washer	40	1607	2	Slot headless set screw, S.S., 3/4 - 24 x 1/2
5	50342-1	1	Seal	41	55274	1	Grease fitting
6	197902	1	Spacer	42	55300	1	Spring, steering friction
7	1608	1	Square nut	43	A226072	1	Swivel bracket w/bearings grease fittings, reverse lock, spring spacer and groove pin
8	197621	1	Gear shift lever arm				
9	1341	3	Hex nut, 1/4 - 20				
10	1199	1	Hex slot hd screw, 1/4 - 20 x 1				
11	224615	1	Gear shift rod upper				
12	197519	1	Pin, gear shift rod coupling	44	197019	1	King pin
13	1014	1	Cotter pin, S.S.	45	197133-1	1	Motor leg
14	197704	1	Coupling, gear shift rod	46	197244	1	Inlet water line
15	1349	1	Hex nut, S.S., 5/16 - 18	47	19342	1	Seal, water line upper
16	1611	1	Spring pin	48	8038	1	Plain washer, S.S.
17	901011	1	Washer, swivel bracket	49	197453	1	Gasket, motor leg exhaust
18	1655	2	Hex slot hd screw w/lockwasher, 1/4 - 20 x 3/8	50	197274	1	Grease fitting
19	224705	1	Gear shift rod lower	51	1604	8	Fill hd screw, 1/4 - 20 x 1 - 1/2
20	28286	2	Friction washer	52	1501	4	Hex hd cap screw, S.S., 5/16 - 18 x 1 - 9/16
21	A197032-1	1	Stern bracket starboard w/screw, foot and handle	53	1515	6	Hex nut, S.S., 5/16 - 18
22	197037	1	Stern bracket pivot bolt	54	1631	1	Stop nut, 3/8 - 16
23	66480	2	Stud	55	8039	1	Plain washer
24	24074	2	Clamp screw foot	56	A314113	1	Stern bracket lock bar w/end
25	A197073	2	Clamp screw w/foot	57	A197532-2	1	Stern bracket port w/screw, foot and handle
26	197075	2	Clamp screw handle				
27	8555	2	Spring pin	58	226544	1	Tilt stop spring
28	8537	2	Spring pin	59	269929	2	Spacer, tilt stop
29	226827	1	Lever, reverse lock link	60	226426	1	Tilt stop
30	226466	1	Pin reverse lock link	61	1666	1	Bowed spring washer
31	226591	1	Link, reverse lock	62	269350	2	Tilt stop pivot
32	1668	1	Pan hd screw, 6 - 32 x 3/8	63	1603	2	Hex bolt, S.S., 5/16 - 18
33	1669	1	Elastic stop nut, 6 - 32	64	197707	2	Shock mount cover
34	1667	1	Groove poin	65	197346	1	Shock mount lower
35	226300	1	Spring		226585-2	1	Decal, "Tilt Release" (not shown)
36	226670	1	Spacer, reverse lock				

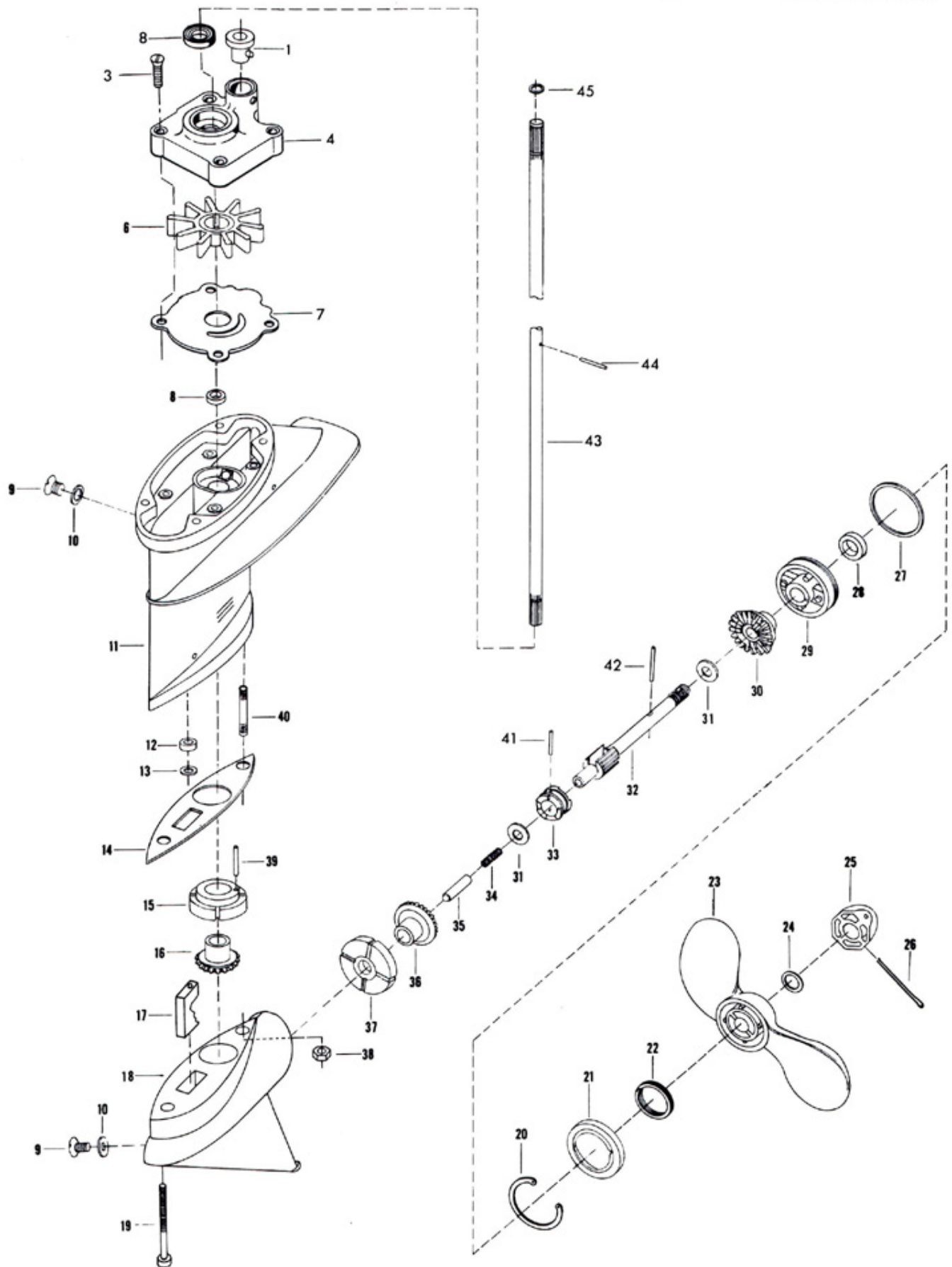
MOTOR LEG



Gear Housing

ILLUS. NO.	PART NO.	QTY.	DESCRIPTION
1	55914	1	Seal, water line lower
3	1138	4	Flat hd screw, S.S., 1/4 - 20 x 1
4	A387060	1	Water pump body w/driveshaft seal
6	50065-1	1	Water pump impeller
7	341562	1	Water pump back plate
8	318307	2	Seal
9	* 50109	2	Plug, gear housing
10	* 8077	2	Washer, gear housing plug
11	A197554-3	1	Gear housing upper w/seal, plug and washer
12	901618-2	1	Seal, gear shift rod
13	901671	1	Seal retainer
14	78555	1	Gasket, gear housing
15	* A50738	1	Thrust bearing, bevel pinion w/spring
16	* 197266	1	Bevel pinion
17	* 901721	1	Clutch shift cam
18	A901054-5	1	Gear housing lower w/bearing, plug and washer
19	* 1888	1	Hex socket hd cap screw, 5/16 - 18 x 2 - 5/16
20	* 50411	1	Retaining ring, propeller shaft bearing cage
21	54262	1	Weed guard
22	53983	1	Retaining ring, weed guard
23	A50265-3	1	Propeller (7 - 1/2 x 7)
24	40342	1	Seal, propeller nut
25	A50094-1	1	Propeller shaft nut w/cotter pin
26	1023	1	Cotter pin, S.S.
27	* 74305	1	Seal, propeller shaft bearing cage
28	* 901307-2	1	Seal, propeller shaft
29	* A50298-1	1	Propeller shaft bearing cage w/bearing and seals
30	* A197662	1	Bevel gear rear w/bearing
31	* 50717	2	Thrust washer, bevel gear
32	* 50098-2	1	Propeller shaft
33	* 50521	1	Clutch
34	* 291719	1	Clutch spring
35	* 901728	1	Clutch shift pin
36	* A197023	1	Bevel gear front w/bearing
37	* 50100	1	Propeller shaft thrust bearing
38	1516	1	Hex nut, 5/16 - 18
39	* 8550	1	Spring pin
40	901008	1	Stud, gear housing
41	8555	1	Spring pin
42	K-238	1	Shear pin, pack of 6 w/cotter pin
43	197128	1	Drive shaft
44	50563	1	Water pump impeller drive pin
45	50342-1	1	Seal, drive shaft upper spline
	C197054	1	Gear housing lower complete, includes all items marked with an asterisk (*)

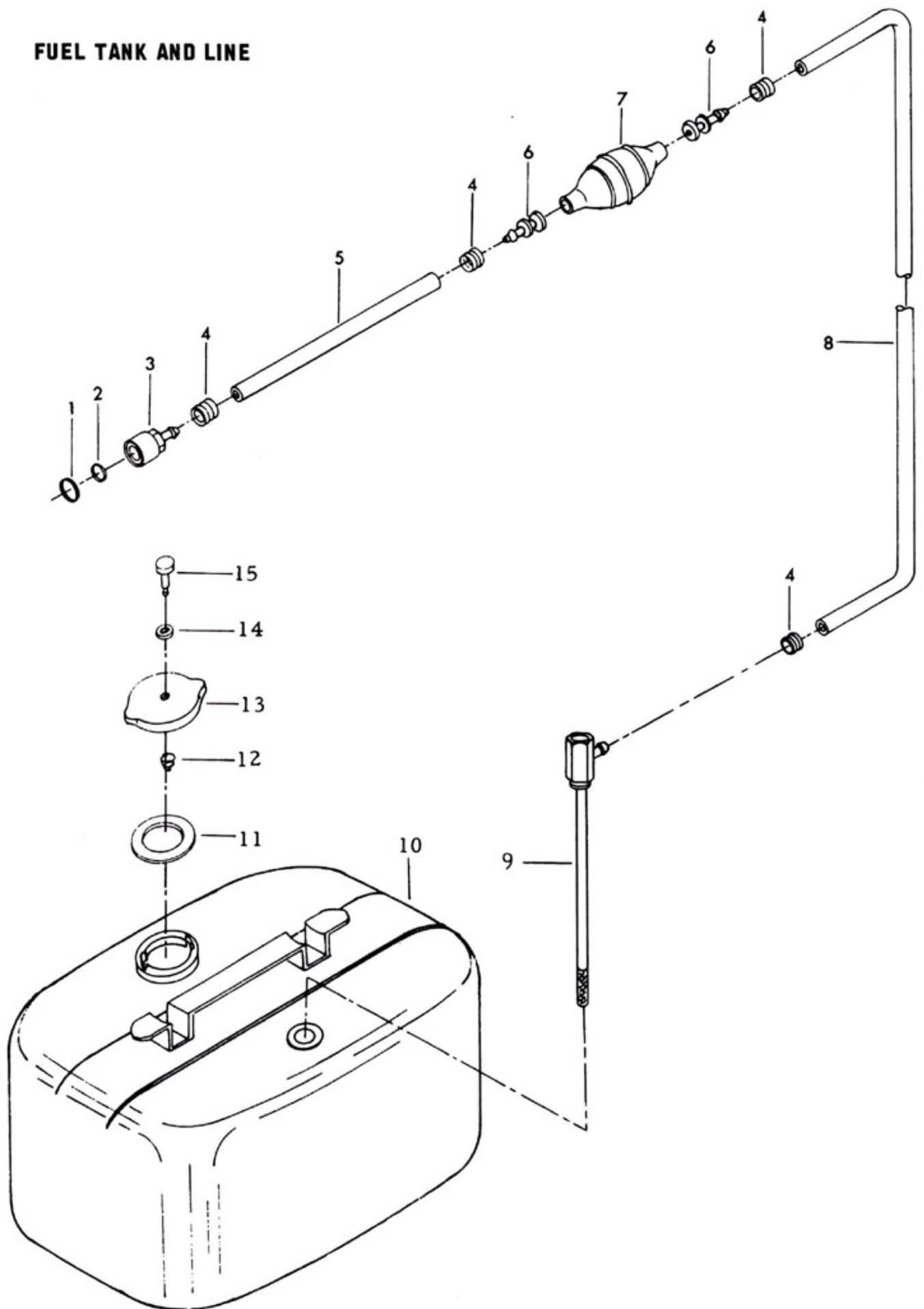
GEAR HOUSING



Fuel Tank and Line

ILLUS. NO.	PART NO.	QTY.	DESCRIPTION
1	* 213342	1	Seal, fuel line coupler (large)
2	* 213735	1	Seal, fuel line coupler (small)
3	* 197787-2	1	Fuel line coupler
4	* 298788	4	Fuel line ferrule
5	* A84754-1	1	Fuel line, short
6	* 298769-1	2	Prime bulb adapter
7	* A298766-1	1	Prime bulb
	A298766	1	Prime bulb complete w/adapter, ferrules
8	* A197752-1	1	Fuel line long w/clamps
9	327755	1	Fuel tank adapter
10	327034	1	Fuel tank
11	76252	1	Filler cap gasket
12	76389	1	Vent screw spring
13	A76251-1	1	Filler cap w/vent screw
14	76257	1	Vent screw gasket
15	76256	1	Vent screw
	224394-3	1	Decal, fuel mixture (not shown)
	A178752	1	Fuel supply line, complete, includes all items marked with an asterisk (*)

FUEL TANK AND LINE



Specifications

HORSEPOWER -- 6 O.B.C. Certified Brake H.P. at 4500 R.P.M.

ENGINE -- Two-cycle, Twin Cylinder, Alternate Firing.

BORE AND STROKE -- 2" Bore x 1 - 11/16 Stroke.

DISPLACEMENT -- 10.6 Cubic Inches.

CONNECTING RODS -- Forged Nickel Steel-Uncased Needle Bearings at Crankshaft. Cased Needle Bearings at Piston Pin.

CRANKSHAFT -- Forged Nickel Steel, Cased Needle Upper Main Bearing, Bronze Lower Main, Center Main and Thrust Bearings.

COOLING -- Water Cooled, Positive Displacement Type Water Pump.

PROPELLER SHAFT AND DRIVESHAFT -- Stainless Steel, Hardened, Ground and Polished.

PROPELLER -- Aluminum Alloy

PROPELLER -- Aluminum Alloy, 7 - 1/2" Diameter 7" Pitch, Right Hand Rotation.

TILT LOCK -- Positive Tilt Lock Permits Engine to Remain in Tilted Position When Not In Use.

FUEL TANK -- Separate Steel Tank, 4 - 1/4 U. S. Gallons.

FUEL SYSTEM -- Float Feed Carburetor, Adjustable High and Low Speed Jets.

FUEL FILTER -- Filter Screens in Fuel Tank and Fuel Pump.

TRANSOM HEIGHT -- 15".

WEIGHT -- 55 Lbs.

RECOMMENDED OPERATING RANGE -- 4000 - 5000 R.P.M.

Lubrication Chart

<u>PART NAME</u>	<u>TYPE OF LUBRICANT</u>	<u>HOW OFTEN</u>
Starter pinion gear	Riverside Two-Cycle Engine Oil	If starter operation becomes sluggish
Starter spool bearings	Riverside Two-Cycle Engine Oil	If starter operation becomes sluggish
Throttle cam follower	Riverside Two-Cycle Engine Oil	Twice each season, oftener if required
Magneto control shaft bearing	Riverside Two-Cycle Engine Oil	Twice each season, oftener if required
Steering handle pinion gear	EP-All Purpose Chassis Lubricant	Twice each season, oftener if required
Steering handle bevel gear	EP-All Purpose Chassis Lubricant	Twice each season, oftener if required
Reverse lock	Riverside Two-Cycle Engine Oil	Twice each season, oftener if required
Clamp screws	Riverside Two-Cycle Engine Oil	Twice each season, oftener if required
Stern bracket pivot bolt	Riverside Two-Cycle Engine Oil	Twice each season, oftener if required
Gear housing	Wards Sea King Hypoid Outboard Gear Oil	Every 30 hours, oftener if required
Fuel line coupler release ring	Riverside Two-Cycle Engine Oil	Twice each season, oftener if required

GREASE FITTINGS -- Grease Fittings Are Provided At Critical Points Where Bearing Surfaces Are Not Exposed Externally Using An Automotive Type Grease Gun and Lubricat, Grease Twice Each Season or Oftener if Required.

Special Adjustments

BREAKER POINT GAP -- .020".

SPARK PLUG -- Champion H-10-J, Gap .030".

FLYWHEEL NUT -- Torque to 35-40 Foot Pounds .

CYLINDER HEAD SCREWS -- Torque to 70 Inch Pounds.

POINT THROTTLE OPENING -- Set the Position of the Throttle Cam Follower Illustration 32, Page 7, so that the Throttle Shutter in the Carburetor will be CLOSED and all slack REMOVED from the linkage when the Throttle Cam Follower is on the Adjusting Mark on the Throttle Cam Plate.

Form No. 60H-958B*